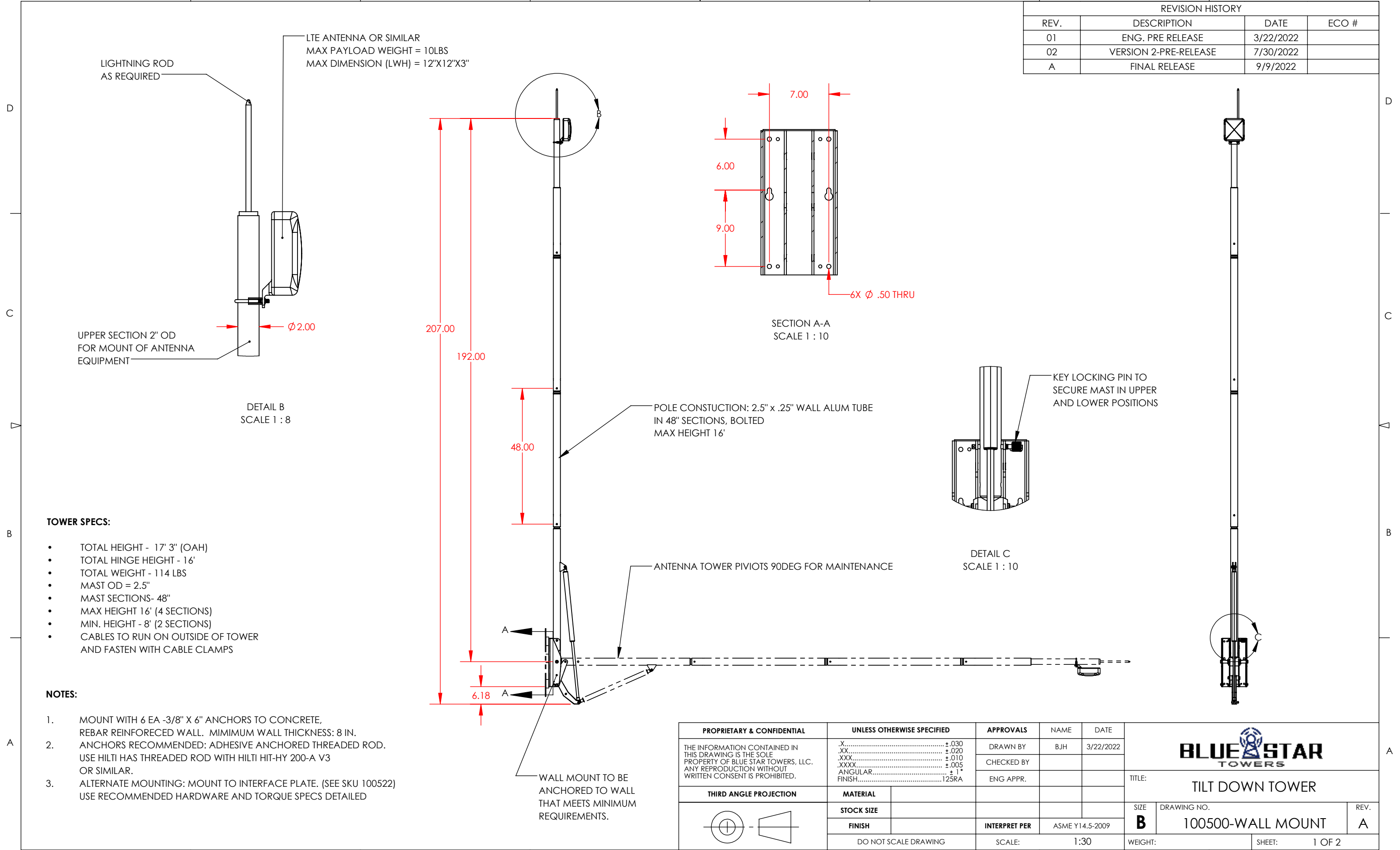


| REVISION HISTORY |                       |           |       |
|------------------|-----------------------|-----------|-------|
| REV.             | DESCRIPTION           | DATE      | ECO # |
| 01               | ENG. PRE RELEASE      | 3/22/2022 |       |
| 02               | VERSION 2-PRE-RELEASE | 7/30/2022 |       |
| A                | FINAL RELEASE         | 9/9/2022  |       |



- TOWER SPECS:**
- TOTAL HEIGHT - 17' 3" (OAH)
  - TOTAL HINGE HEIGHT - 16'
  - TOTAL WEIGHT - 114 LBS
  - MAST OD = 2.5"
  - MAST SECTIONS- 48"
  - MAX HEIGHT 16' (4 SECTIONS)
  - MIN. HEIGHT - 8' (2 SECTIONS)
  - CABLES TO RUN ON OUTSIDE OF TOWER AND FASTEN WITH CABLE CLAMPS

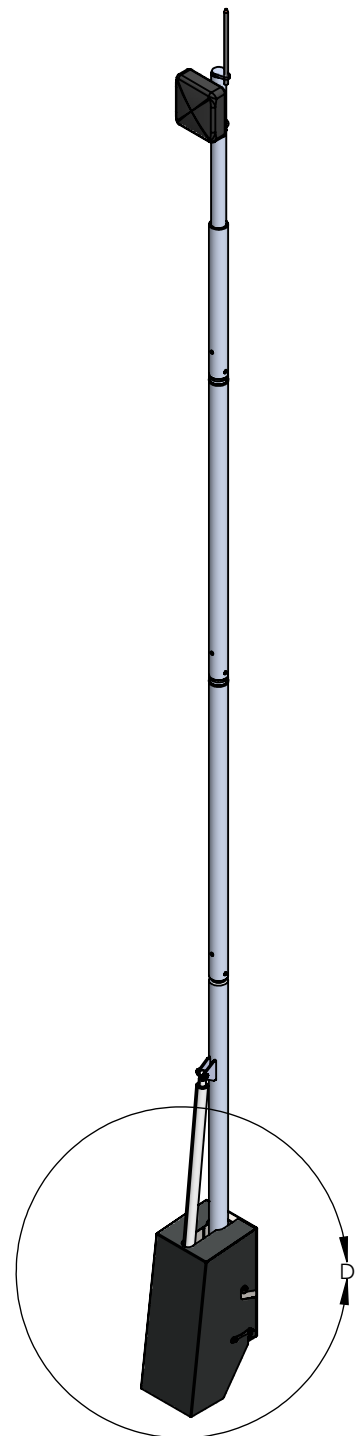
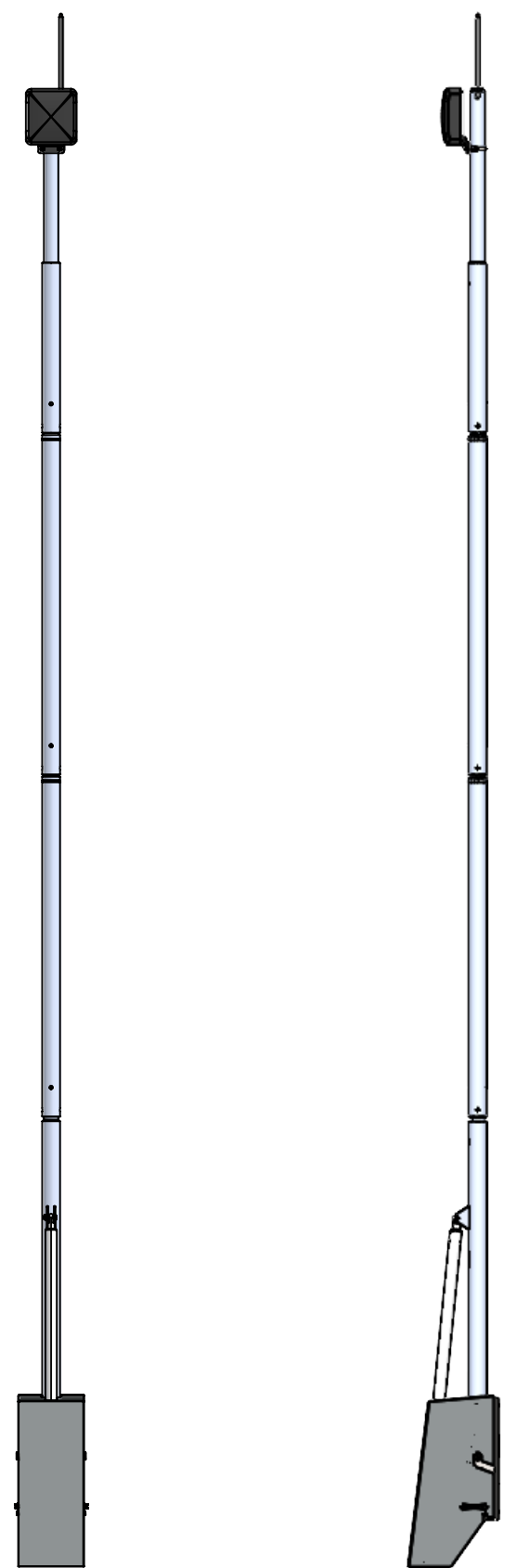
- NOTES:**
1. MOUNT WITH 6 EA -3/8" X 6" ANCHORS TO CONCRETE, REBAR REINFORCED WALL. MINIMUM WALL THICKNESS: 8 IN.
  2. ANCHORS RECOMMENDED: ADHESIVE ANCHORED THREADED ROD. USE HILTI HAS THREADED ROD WITH HILTI HIT-HY 200-A V3 OR SIMILAR.
  3. ALTERNATE MOUNTING: MOUNT TO INTERFACE PLATE. (SEE SKU 100522) USE RECOMMENDED HARDWARE AND TORQUE SPECS DETAILED

|  |  |                                   |       |                      |                 |                         |
|--|--|-----------------------------------|-------|----------------------|-----------------|-------------------------|
| <b>PROPRIETARY &amp; CONFIDENTIAL</b>  |  | <b>UNLESS OTHERWISE SPECIFIED</b> |       | <b>APPROVALS</b>     | NAME            | DATE                    |
| THE INFORMATION CONTAINED IN THIS DRAWING IS THE SOLE PROPERTY OF BLUE STAR TOWERS, LLC. ANY REPRODUCTION WITHOUT WRITTEN CONSENT IS PROHIBITED. |  | .X.....                           | ±.030 | DRAWN BY             | BJH             | 3/22/2022               |
|  |  | .XX.....                          | ±.020 |                      |                 |                         |
|  |  | .XXX.....                         | ±.010 | CHECKED BY           |                 |                         |
|  |  | .XXXX.....                        | ±.005 |                      |                 |                         |
|  |  | ANGULAR.....                      | ± 1°  | ENG APPR.            |                 |                         |
|  |  | FINISH.....                       | 125RA |                      |                 |                         |
| <b>THIRD ANGLE PROJECTION</b>  |  | <b>MATERIAL</b>                   |       |                      |                 |                         |
|  |  | <b>STOCK SIZE</b>                 |       |                      |                 |                         |
|  |  | <b>FINISH</b>                     |       | <b>INTERPRET PER</b> | ASME Y14.5-2009 |                         |
|  |  | DO NOT SCALE DRAWING              |       | SCALE:               | 1:30            |                         |
|  |  |                                   |       | TITLE:               |                 | <b>BLUE STAR TOWERS</b> |
|  |  |                                   |       | DRAWING NO.          |                 | <b>TILT DOWN TOWER</b>  |
|  |  |                                   |       | SIZE                 | <b>B</b>        | REV. <b>A</b>           |
|  |  |                                   |       | WEIGHT:              |                 | 100500-WALL MOUNT       |
|  |  |                                   |       | SHEET:               |                 | 1 OF 2                  |

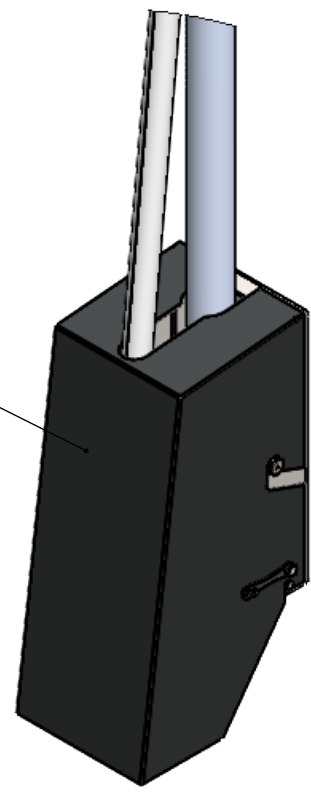
8 7 6 5 4 3 2 1

D  
C  
B  
A


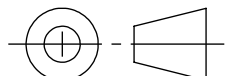
D  
C  
B  
A



WEATHER COVER  
(NON LOCKING)



DETAIL D  
SCALE 1 : 10

|  |  |                                   |                 |                      |                 |             |   |  |
|--|--|-----------------------------------|-----------------|----------------------|-----------------|-------------|---|--|
| <b>PROPRIETARY &amp; CONFIDENTIAL</b>  |  | <b>UNLESS OTHERWISE SPECIFIED</b> |                 | <b>APPROVALS</b>     | <b>NAME</b>     | <b>DATE</b> |  |  |
| THE INFORMATION CONTAINED IN THIS DRAWING IS THE SOLE PROPERTY OF BLUE STAR TOWERS, LLC. ANY REPRODUCTION WITHOUT WRITTEN CONSENT IS PROHIBITED. |  | .X..... ± .030                    | .XX..... ± .020 | DRAWN BY             | BJH             | 3/22/2022   |   |  |
| <b>THIRD ANGLE PROJECTION</b>  |  | <b>MATERIAL</b>                   |                 | CHECKED BY           |                 |             | SIZE: DRAWING NO. REV.  |  |
|   |  | <b>STOCK SIZE</b>                 |                 | ENG APPR.            |                 |             | <b>B</b> 100500-WALL MOUNT A  |  |
|  |  | <b>FINISH</b>                     |                 | <b>INTERPRET PER</b> | ASME Y14.5-2009 |             | WEIGHT: SHEET: 2 OF 2   |  |
|  |  | DO NOT SCALE DRAWING              |                 | SCALE:               | 1:25            |             |   |  |

8 7 6 5 4 3 2 1